

Welcome to ISINN-26

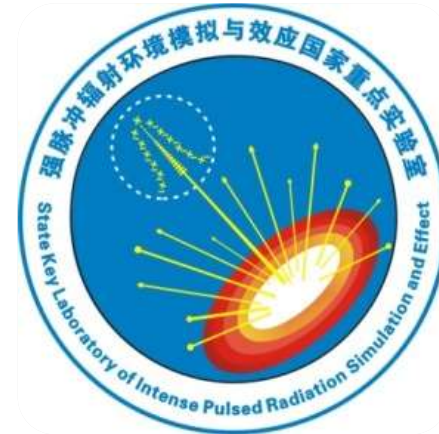
Xi'an, China, May 21-25, 2018

Co-organized by



西安交通大学

XI'AN JIAOTONG UNIVERSITY



Where--Xi'an, China



Terra-Cotta Warriors, ~210 BC



The City Wall, finished in 1378



Great Wild Goose Pagoda, finished in 652



□ Starting point of the Silk Road

□ Famous for its rich cultural heritage

With who?-- XJTU & SKLIPRSE

Xi'an Jiaotong University (XJTU)



State Key Laboratory of Intense Pulsed Radiation Simulation and Effect (SKLIPRSE)



Introduction to XJTU

Founded in 1896, was named Nanyang (南洋) Public College in Shanghai; Renamed to Jiaotong (交通) University in 1921;

In 1956, most students and staffs moved to Xi'an;

In 1959, Jiaotong Univ. was divided into SJTU and XJTU.

Now XJTU is a comprehensive university with 17 academic schools and 4 teaching hospitals.

Introduction to SKLIPRSE



◆ Established in 2012

- Authorized by Ministry of Science and Technology, PRC
- Supported by Northwest Institute of Nuclear Technology (NINT)



Introduction to SKLIPRSE



◆ Research Fields

① Intense Pulsed Radiation

- High power electrical pulse
- Intense pulsed beam
- High power pulsed electro-magnetic field

② Radiation Effect

- Mechanism of radiation effect
- Simulation of radiation effect
- Experimental technique of radiation effect
- Radiation hardening and evaluation

③ Pulsed Radiation Measurement and Diagnosis

- Pulsed radiation measuring
- Diagnostic of pulse radiation process

Introduction to SKLIPRSE



◆ Research Area in Neutron Physics

- Investigation in pulsed neutron flux measurement
- Fast and ultra-fast pulsed neutron and X-ray detection
- Neutron detection in harsh environments
- Neutron energy spectrum measurement
- Calibration techniques



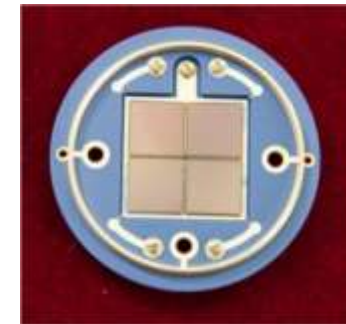
Magnetic proton recoil neutron spectrometer



Eight-element neutron scatter camera



Diamond detector
(ϕ 46 mm \times 300 μ m)



4H-SiC detector
(20mm \times 20mm)



Welcome to China!
Welcome to Xi'an!
Welcome to ISINN-26!